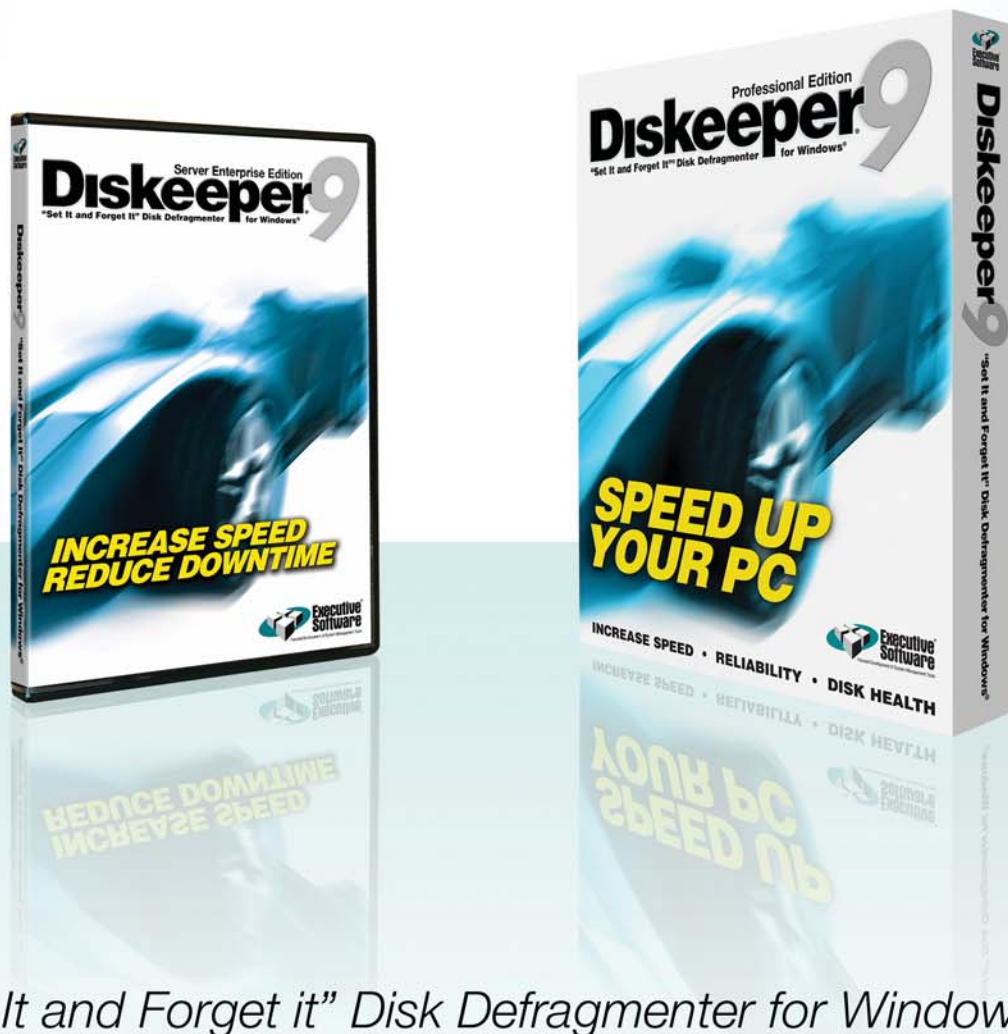


Why do I need **Diskeeper**[®] if there is a **Defragmenter** in Windows[®]?



"Set It and Forget it" Disk Defragmenter for Windows

Why do I need Diskeeper if there is a defragmenter in Windows?

The Built-In Defragmenter is NOT a Network Solution

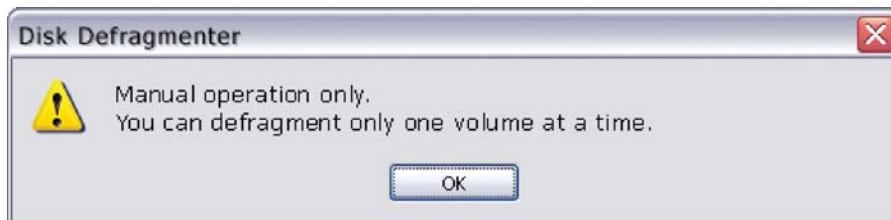
“Disk Defragmenter is not intended to be a tool for administrators to maintain workstations. This version is not designed to be run remotely and cannot be scheduled to automatically defragment a volume...”

—Microsoft® Knowledge Base Article 231176

Manual Defragmenter in Windows 2000 / XP / Windows Server™ 2003



**Is it wise to risk giving
your users admin privileges?**



**Who has time to run around and manually
defragment every hard disk volume on every computer?**

All defragmenters do not do the same thing. A manual defragmenter is not designed to be used on even a small network; it just can't keep up with the rate of performance-robbing fragmentation modern systems generate every day. Diskeeper is built from the ground up to give you a complete "Set It and Forget It"® performance solution while lowering your total cost of ownership and resolving many help desk issues before they occur.

Why do I need
Diskeeper
 if there is a
 defragmenter in Windows?



Only Diskeeper gives you the network functionality you need

Feature	Diskeeper for Windows NT®/2000/XP Server 2003/95/98/Me	Windows® 2000/XP Server 2003 Disk Defragmenter
Speed of Operation	Fastest Windows defragmenter ever built.	Slow. Competes with applications running at the same time.
Scheduling	Full "Set It and Forget It"® automatic operation. Diskeeper includes a wide range of scheduling options.	Manual only in 2000; very limited fixed scheduling in XP/2003.
Smart Scheduling™	Smart scheduling defragments your disks as often as needed to produce and maintain peak system speeds.	Not available.
Exclusion Periods	Yes.	Not available.
Networking	Superlative networking functionality available in Diskeeper Administrator Edition.	Not available.
Defragmentation Methods	Select from three defragmentation methods.	Only one.
Screen Saver Scheduling	Diskeeper can be scheduled to smartly defragment while a screen saver is active.	Not available.
Master File Table (MFT) Paging File Defragmentation	Diskeeper can safely defragment the MFT and Paging Files at Boot Time. This is the only safe Microsoft recommended method.	Not available.
Priority Settings	Five (5) priority settings to accommodate any workload.	One setting.
Boot Time Defragmentation	Yes.	Not available.
Mixed Network Defragmentation	Yes.	Not available.
Performance Analysis Report/Reliability Analysis Report	The Performance and Reliability Report show factors that directly affect the performance and reliability of your disk volume.	Not available.
Laptop Power Management	Diskeeper is designed not to run a defragmentation job when a system is on battery power. This feature is configurable.	Not available.

To view a full comparison chart go to www.executive.com/compare

Why do I need Diskeeper

if there is a
defragmenter in Windows?

“When considering the significant impact on TCO, it is difficult to find any argument to position the manual defragmenter over automated, network defragmentation.”

— International Data Corporation (IDC), 2003

Can you really afford a manual solution?	Manual Defrag Staff hours annually	Manual Defrag Staff costs annually	Diskeeper Staff hours annually	Diskeeper Staff costs annually
IDC Scenario 1 1 Server 10 Workstations	572	\$25,168	24	\$1,056
IDC Scenario 2 10 Servers 1000 Workstations	52,520	\$2,310,880	24	\$1,056
IDC Scenario 3 25 Servers 5000 Workstations	261,300	\$11,497,200	24	\$1,056

Get more information. Read the full IDC White Paper at:
www.executive.com/IDC2003

Buy Diskeeper now.

For the best price and for volume license discounts, contact your local reseller or call

1-800-829-6468 ext. 9056

to find a reseller near you (818-771-1600 ext. 9056 outside the USA)

www.executive.com/DKDD

Volume License, Government and educational discounts available.



Executive Software®

Focused Development of System Management Tools

Executive Software

7590 North Glenoaks Blvd.
Burbank, CA 91504
800 829-6468 • www.executive.com

Executive Software Europe

Kings House, Cantelupe Road
East Grinstead, West Sussex RH19 3BE UK
(44)1 342 327477 • www.executive-europe.com