

# Getting Started with Diskeeper®

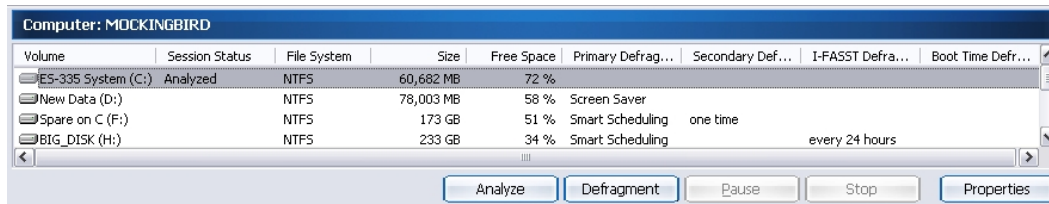
If you are new to Diskeeper, here are some helpful tips for getting the best results.

Diskeeper has an entirely new approach to defragmenting when compared to what you may be accustomed to. Diskeeper was designed to allow you to automate background defragmentation without impacting the use of other programs. This procedure will demonstrate how to set up and use Diskeeper as it is intended to be used—for automatic system maintenance.

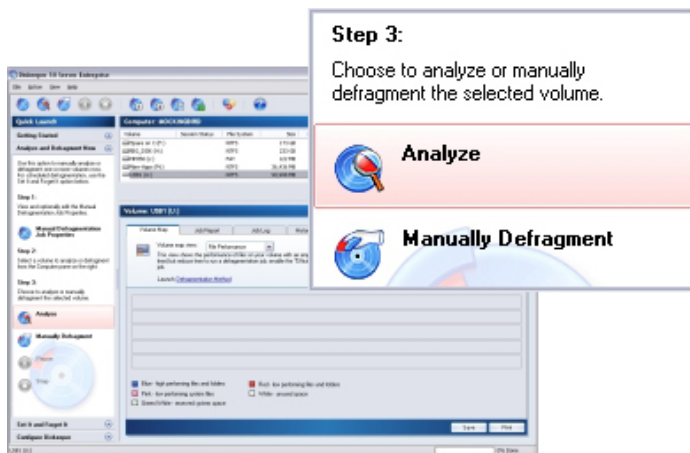
## Let's Look At Your Hard Drive

The following brief steps will give you a quick and easy demonstration of Diskeeper on your own workstation or server, and introduce recommended settings.

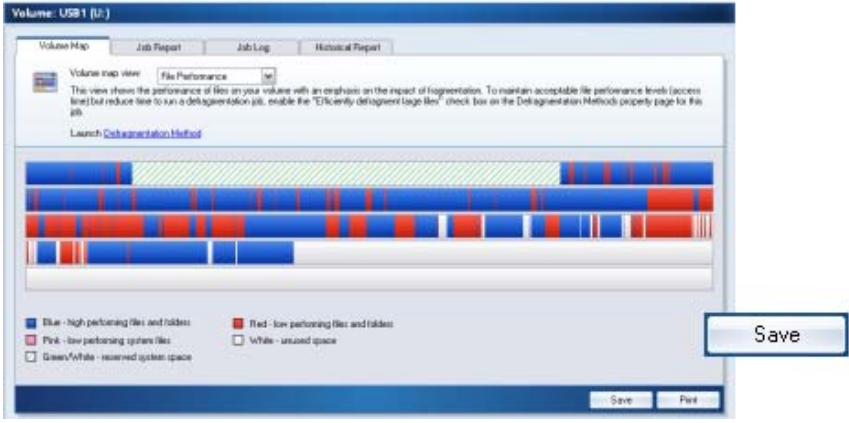
1. In the **Computer** pane, locate and select one of your system's volumes.



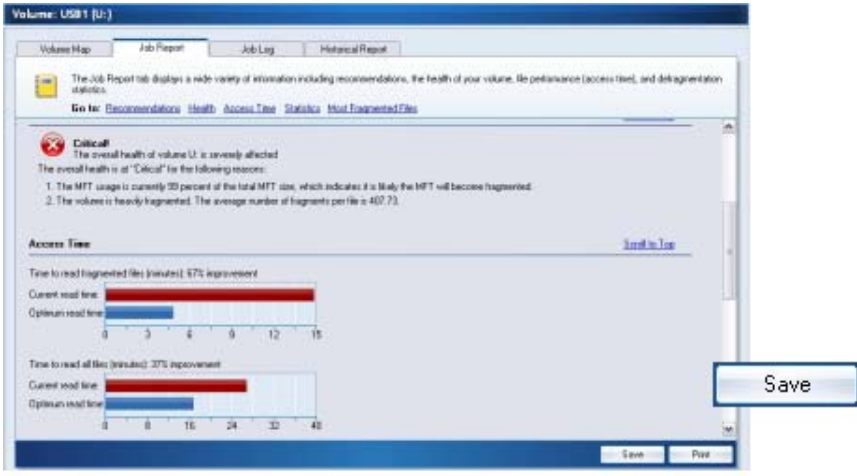
2. In the **Quick Launch** pane, expand the **Analyze and Defragment Now** task. Next, click **Analyze** to start the analysis. Keep in mind the analysis may take a few seconds the larger your volume, the longer this will take.



3. The **Volume Map** tab gives you an at-a-glance view of the condition of your volume. As the legend at the bottom of the screen explains, the red areas show the extent of fragmentation on the volume. You can click **Save** at the bottom of the screen to save a bitmap file of the Volume Map.



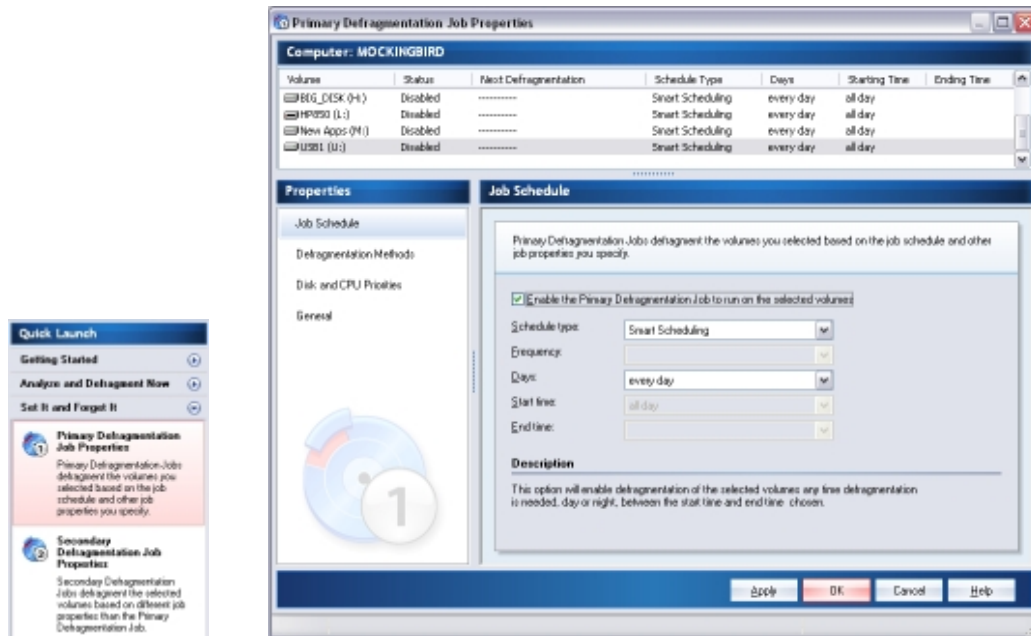
4. After the analysis completes click the **Job Report** tab. The Job Report tab provides fragmentation statistics, volume health information, file access times, lists of the most fragmented files on the volume, and recommendations for achieving and maintaining optimal performance. Save this particular analysis by clicking **Save** at the bottom of the Diskette Defragmenter console.



5. Repeat steps 1 through 4 above for each volume on your system.

## Let's Set It and Forget It<sup>®</sup>

Next, navigate to and click **Set It and Forget It** in the Quick Launch pane. Once open, select **Primary Defragmentation Job**. The Primary Defragmentation Job Properties page is displayed. After highlighting all volumes on your system in this window, click the check box to **Enable the Primary Defragmentation Job on the selected volumes**. Click **OK** and you're done! You have set a "Smart Schedule" for each of the volumes on your computer.



From this point forward Diskeeper will automatically maintain your volumes, working in the background with no further intervention from you.

## Following Up

To check on Diskeeper progress, open Diskeeper the next day (after Diskeeper has executed your defragmentation schedule) and re-run the analysis. Repeat steps 1 through 5 above to record analysis data (remember to save the results to a different file name than the “before” analysis results). By comparing the “before” and “after” reports, you can see the benefit Diskeeper provides to your system’s performance and reliability.

The Historical Report tab is another great way to see the benefits for automatic defragmentation. The Historical Report shows graphs indicating the total number of fragments eliminated, the overall fragmentation level, and the file performance improvement gained by using Diskeeper. This information is shown for your computer overall, as well as on a per-volume basis. As you highlight each volume in the Computer pane, the information displayed in the Historical Report changes to reflect the selected volume.

Each graph in the Historical Report shows “before and after” results. Over time, the Historical Report tab will give you a good measure of the benefit Diskeeper provides.

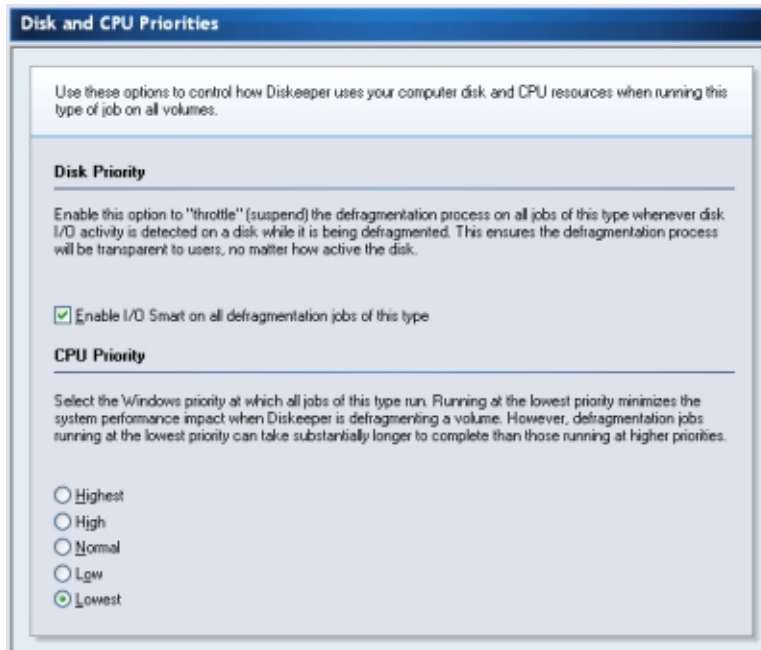
## Making Diskeeper Operation Transparent

After seeing the benefits of Diskeeper, you can set it up to run as unobtrusively as possible. Doing so ensures your disk volumes are kept in top shape, and your computer’s performance is not slowed down by the defragmentation process itself.

Diskeeper is designed to be run automatically. Doing so ensures the least amount of system resource utilization, in part because the Diskeeper console (required for manual operation) is not running, thus saving resources, and also because I/O Smart is enabled and the CPU Priority is set to “Lowest” (by default).

By default, Manual Defragmentation Jobs run at a higher CPU priority, and I/O Smart is not enabled, so Manual Defragmentation Jobs can have more of a noticeable impact on your system when the job is running.

Of course, the Disk and CPU Priority settings are adjustable in the various Defragmentation Job Properties dialogs:



As another way of making Diskeeper "transparent", it is also highly recommended that you use the exclusive Smart Scheduling<sup>®</sup> feature in Diskeeper. Smart Scheduling goes beyond the limitations of fixed schedules and eliminates fragmented files based on the actual needs of your disks. It defragments your volumes as often as needed no more and no less to achieve and maintain peak system speed. Since all systems (and volumes within a system) fragment at different and ever-changing rates, this self-learning feature dynamically adjusts to changing conditions on a "per-volume" level, eliminating the need for any additional work on your part to maintain ideal file system performance and health.

© 2005 by Diskeeper Corporation

All Rights Reserved.

Diskeeper, Set It and Forget It and Smart Scheduling are either registered trademarks or trademarks of Diskeeper Corporation in the United States and other countries.

All other trademarks are the property of their respective owners.